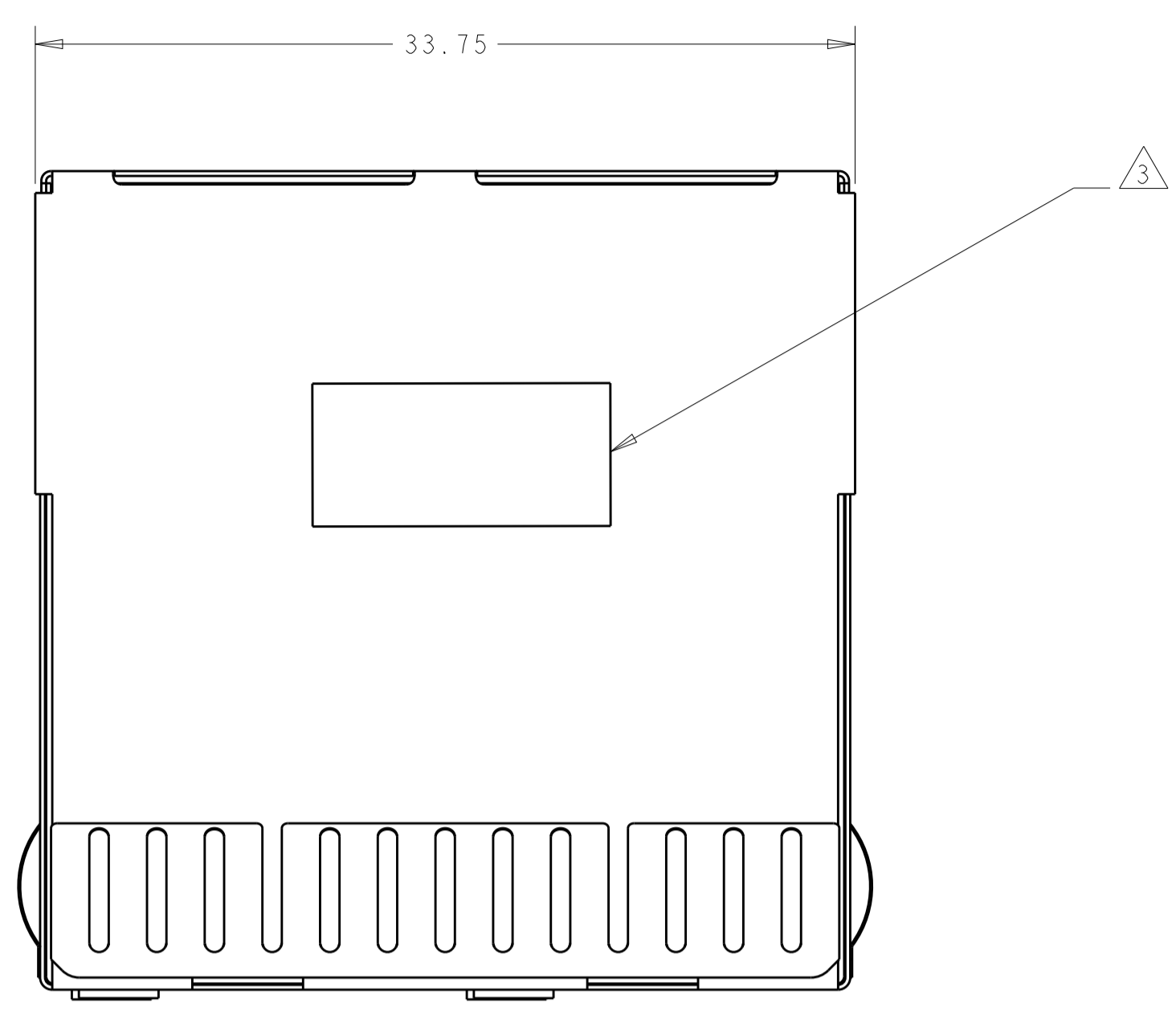
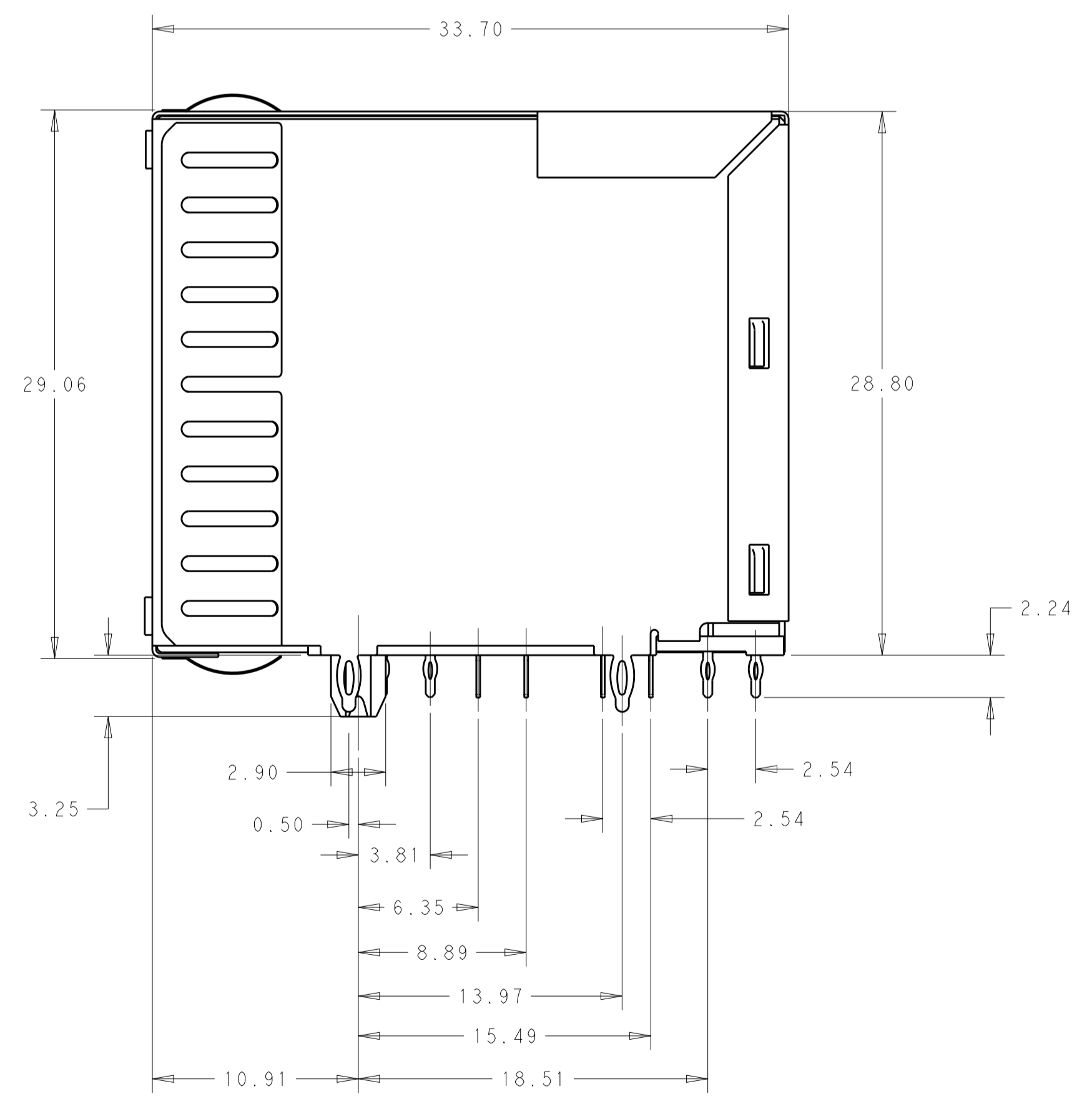
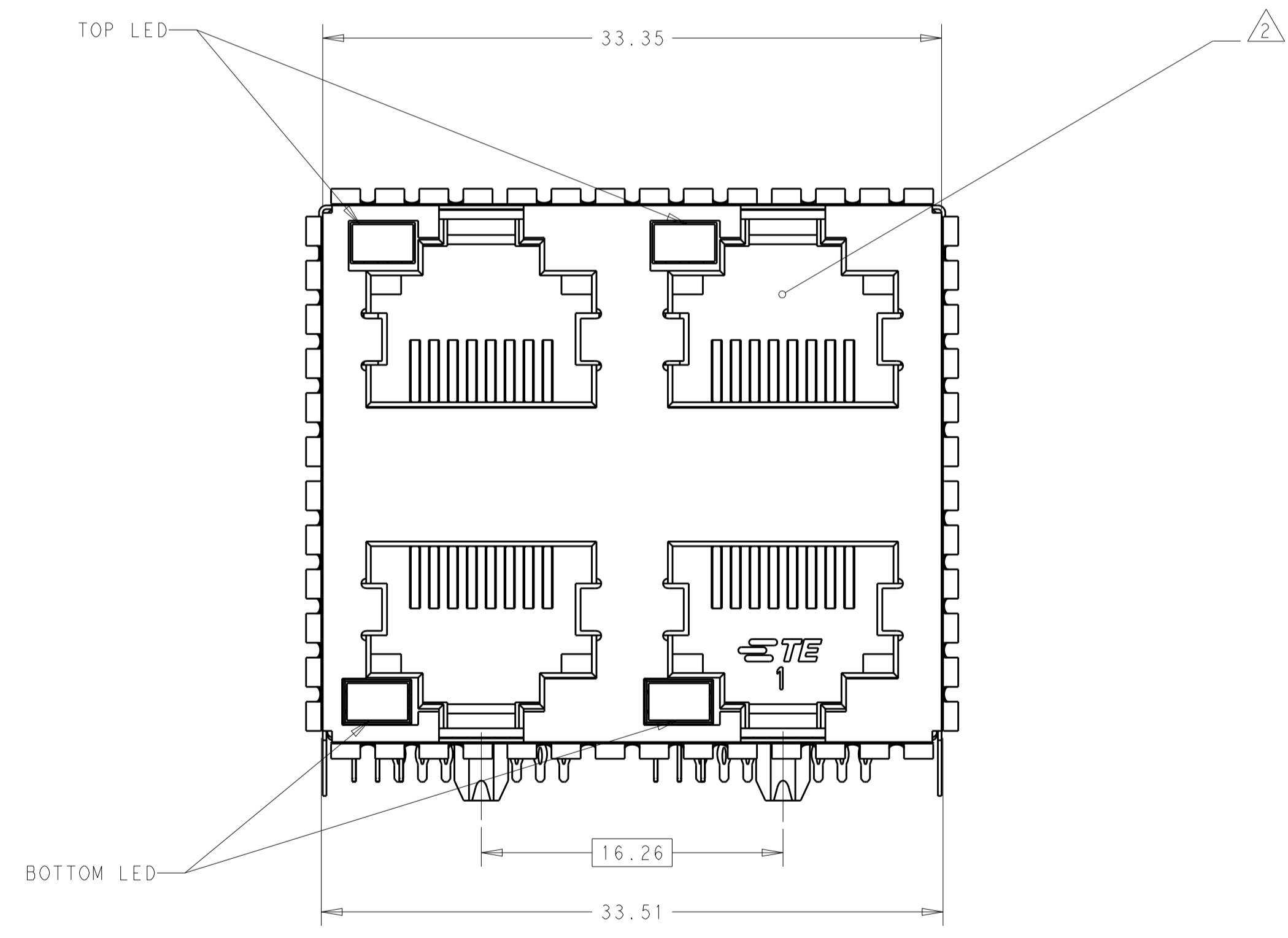


REVISIONS				
P.	LTN.	DESCRIPTION	DATE	APVD.
A		INITIAL RELEASE	14APR2016	LL SH
B		REV PER ECO-16-008899	13JUN2016	LL SH
C		ECO-16-014891	14OCT2016	LL SH



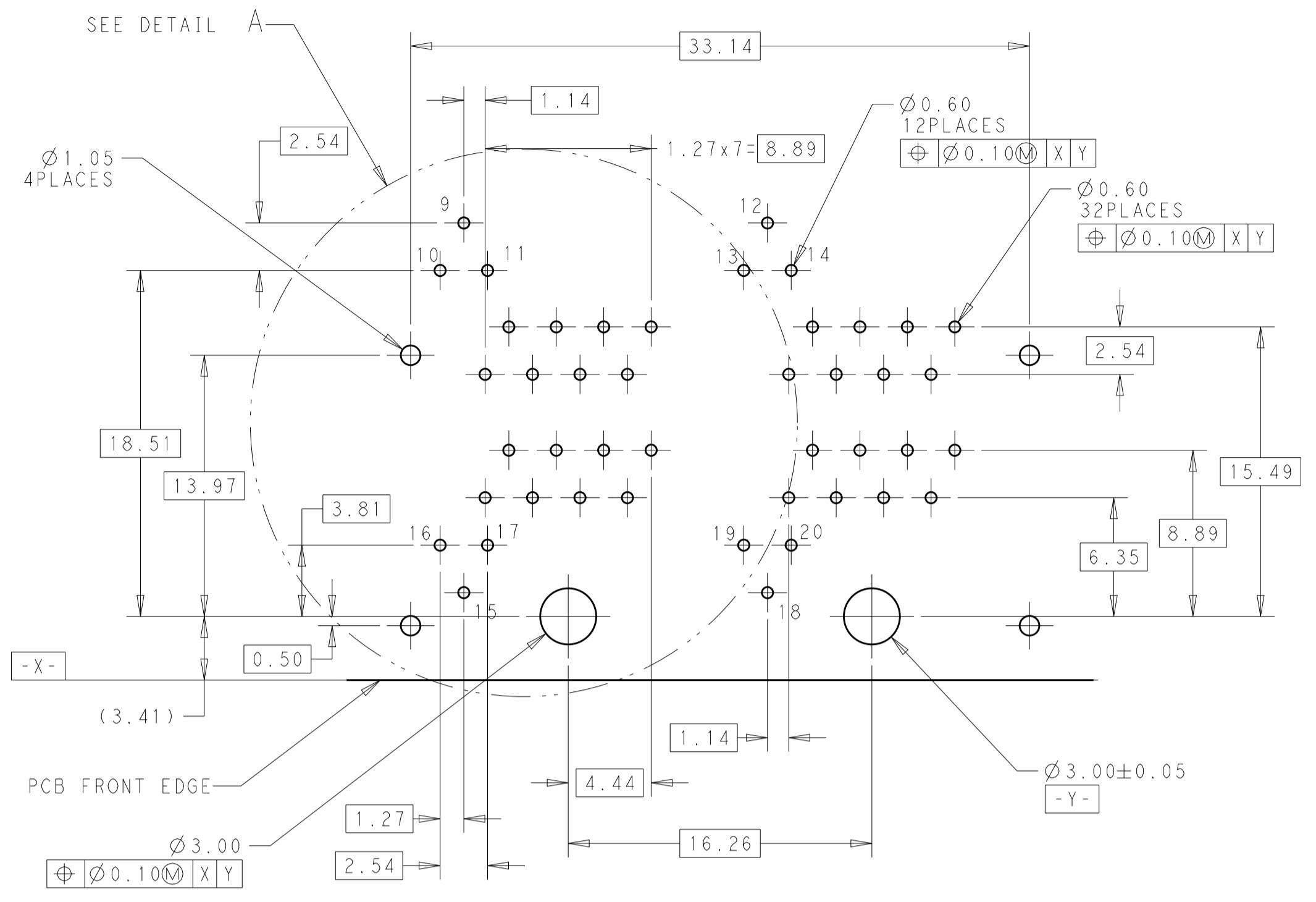
- 1 MATERIAL:
 HOUSING - HIGH TEMPERATURE THERMOPLASTIC, BLCBK, UL94V-0.
 OVERMOLDED TERMINAL ARRAY - HIGH TEMPERATURE THERMOPLASTIC, BLCBK.
 TERMINALS - 0.3 THICK PHOS BRONZE, PLATED WITH 0.76µm MIN THICK GOLD ON CONTACT AREA AND 1.27µm MINIMUM NICKEL UNDERPLATED OVERALL.
 PRESS FIT PINS- 0.2 THICK PHOS BRONZE, PLATED WITH 2.03µm MATTE TIN IN EON AREA, AND 1.27µm MINIMUM NICKEL UNDERPLATED OVERALL.
 SHIELD - 0.20 THICK COPPER ALLOY PREPLATED WITH 1.27µm MIN NICKEL OVER ALL.
 COMPENSATION PCB: FR-4
 EMI SPRING - 0.08 THICK PHOS BRONZE, PLATED WITH 1.27µm MIN NICKEL.
- 2 JACK CAVITY CONFORMS TO FCC RULES AND REGULATIONS PART 68, SUBPART F.
- 3 PART NUMBER, DATE CODE TO BE MARKED IN APPROXIMATE LOCATION SHOWN.
- 4. LED CHARACTERISTICS(@If=20mA):
 LUMINOUS INTENSITY: RED(3-13 mcd) / GREEN(3-13mcd).
 WAVE LENGTH: RED(640-660 nm) / GREEN(565-575nm).



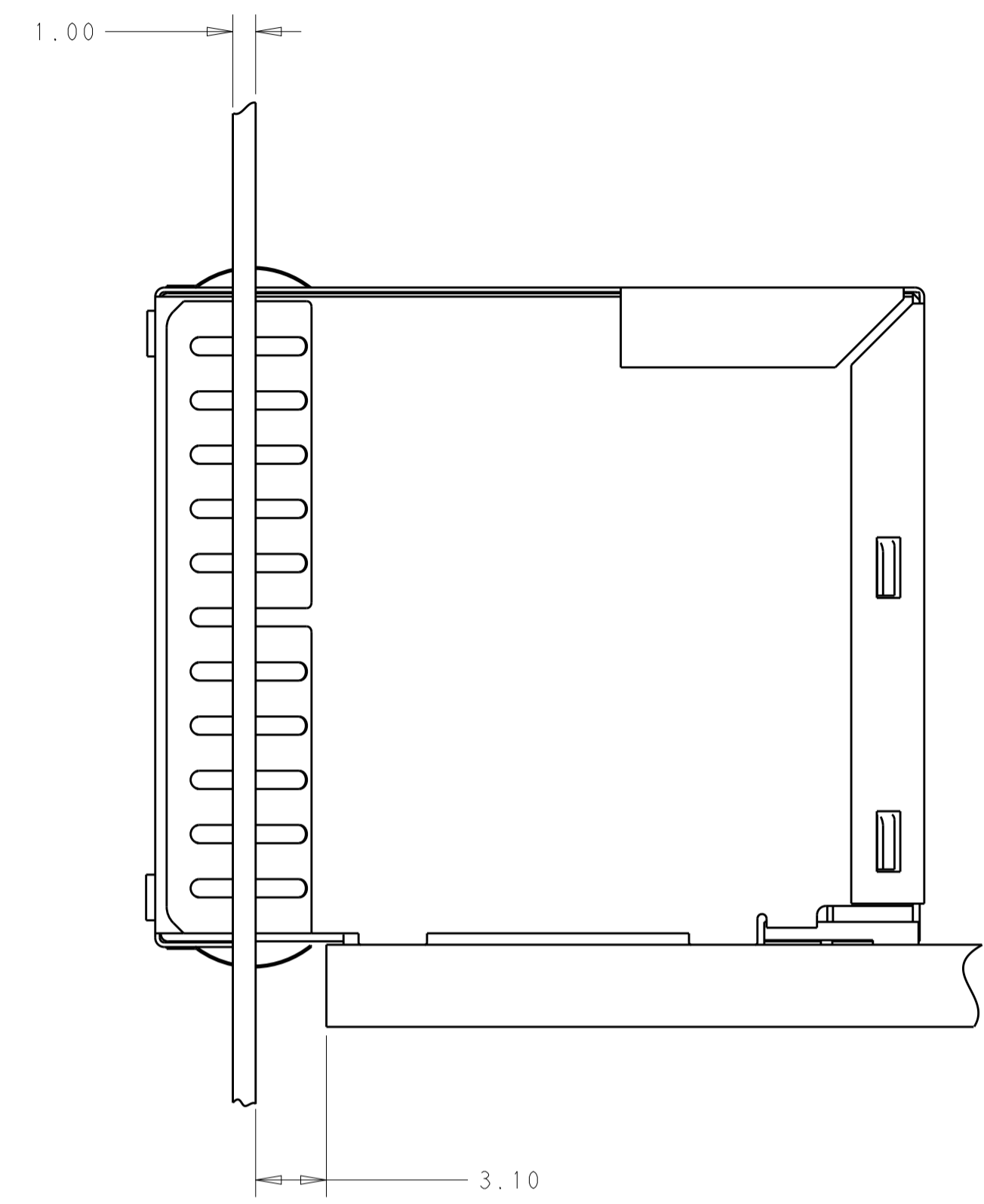
TRAY	2295251-1
PACKAGE	PART NO.

THIS DRAWING IS A CONTROLLED DOCUMENT.		OWN: LEO LI 19AUG2015	TE Connectivity NAME: STACKED, MODULAR JACK RJ45 2X2 CAT5E, W/LED PRODUCT SPEC: 108-60109 APPLICATION SPEC: 114-60018 SIZE: A1 CAGE CODE: 00779 DRAWING NO: 2295251 RESTRICTED TO: - CUSTOMER DRAWING
DIMENSIONS: mm		CHK: SEAN HAN 19AUG2015	
TOLERANCES UNLESS OTHERWISE SPECIFIED:		APVD: SEAN HAN 19AUG2015	
0 PLC ± 1 PLC ±0.25 2 PLC ±0.25 3 PLC ± 4 PLC ± ANGLES ±		MATERIAL: 1 FINISH: 1	
SCALE: 2:1		SHEET 1 OF 2	REV C

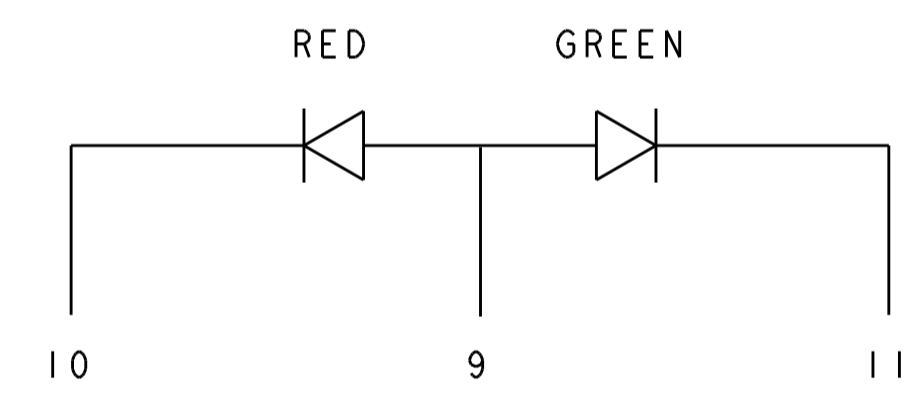
REVISIONS				
P.	LTN.	DESCRIPTION	DATE	APP'D.
-	-	SEE SHEET 1	-	-



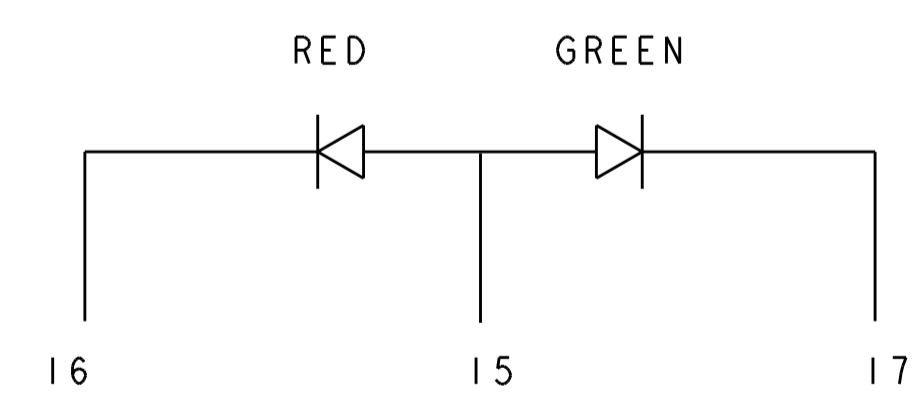
RECOMMENDED PC BOARD LAYOUT VIEWED FROM COMPONENT SIDE



VIEW SHOWN ASSEMBLED TO PCB AND RECOMMENDED PANEL

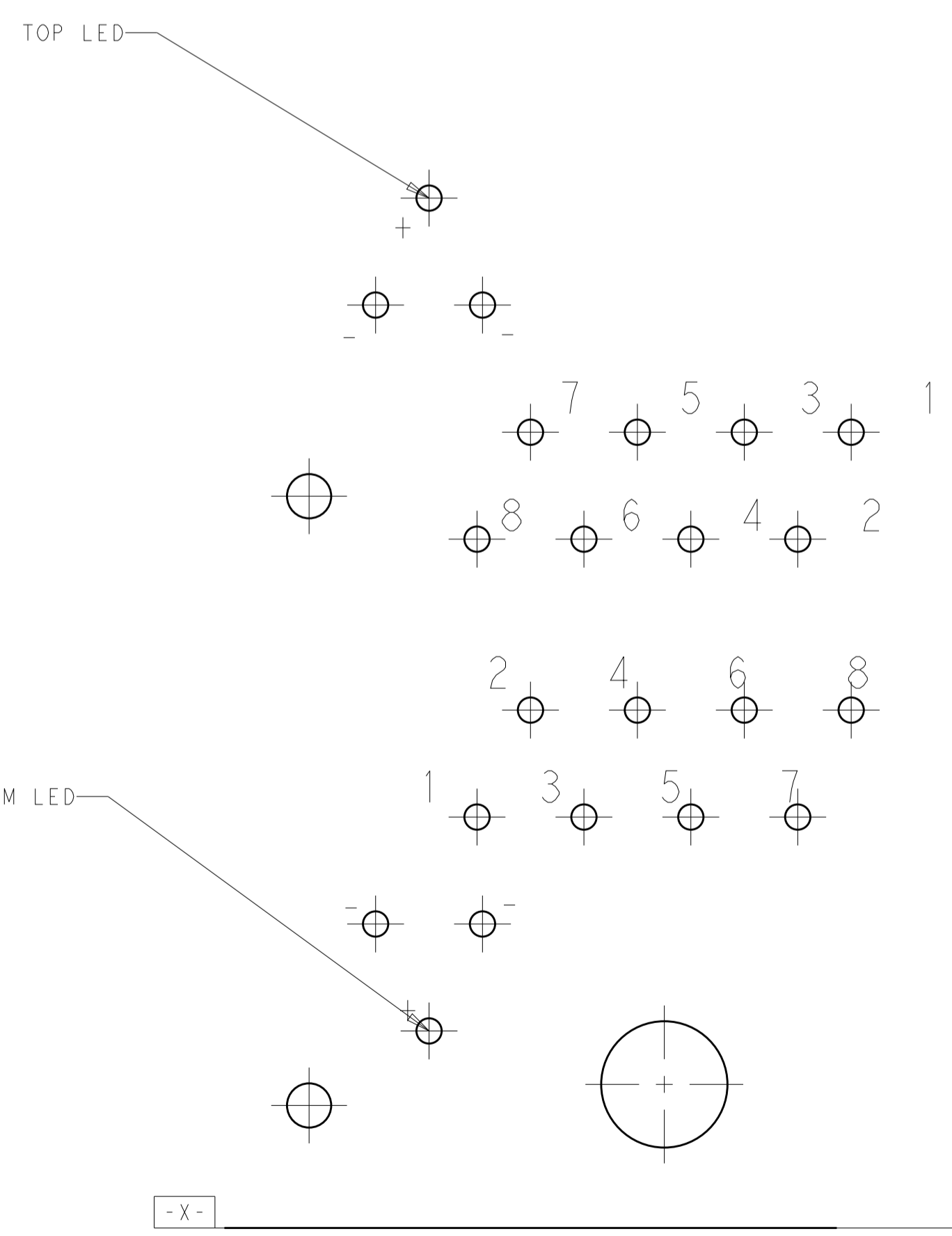


TOP LED

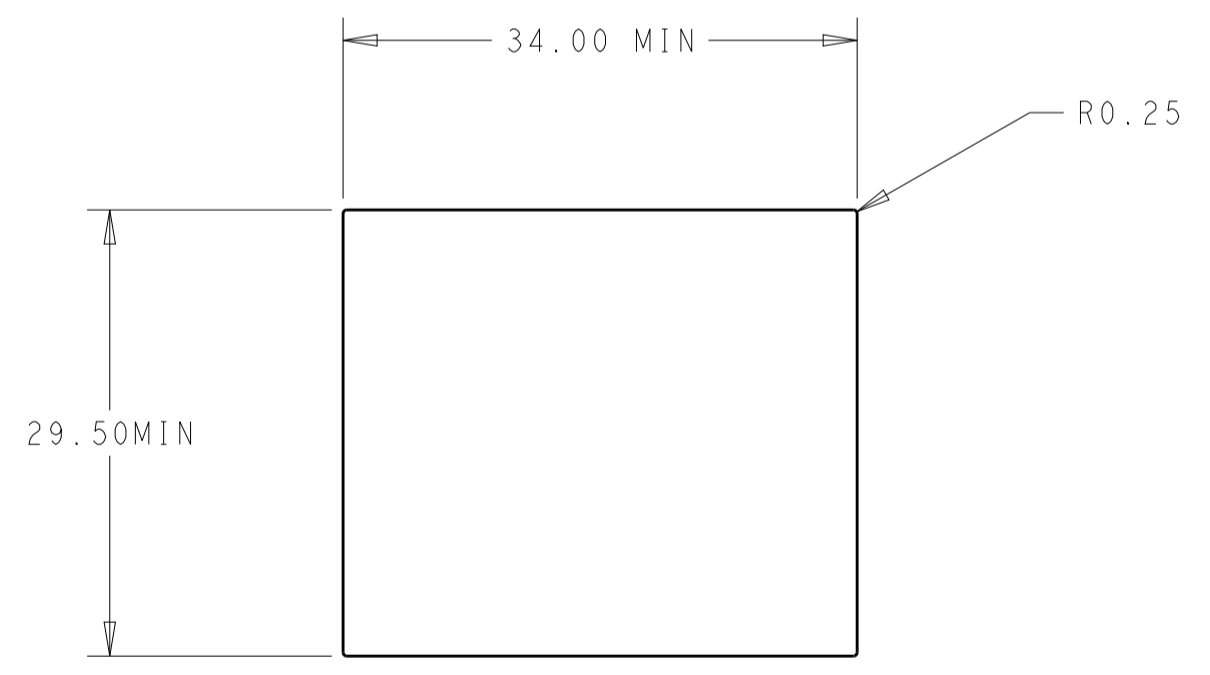


BOTTOM LED

LED SHCMA TIC
LED WILL EMULATE "YELLOW" LIGHT WHEN BOTH GREEN AND RED
DIODES ARE DRIVEN AT CONSTANT CURRENT.



DETAIL A
SCALE 8:1



RECOMMENDED PANNEL LAYOUT

THIS DRAWING IS A CONTROLLED DOCUMENT.		OWN: LEO LI 19AUG2015	TE Connectivity
DIMENSIONS: mm		CHK: SEAN HAN 19AUG2015	
TOLERANCES UNLESS OTHERWISE SPECIFIED:		APP'D: SEAN HAN 19AUG2015	NAME: STACKED, MODULAR JACK RJ45 2X2 CAT5E, W/LED
0 PLC ±	1 PLC ±0.05	PRODUCT SPEC	SIZE: CAGE CODE DRAWING NO. RESTRICTED TO
2 PLC ±0.05	3 PLC ±	APPLICATION SPEC	A100779C=2295251
4 PLC ±	ANGLES ±	WEIGHT	SCALE 4:1 SHEET 2 OF 2 REV C
MATERIAL	FINISH	CUSTOMER DRAWING	